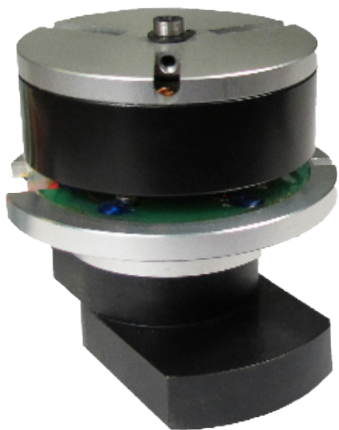


SurfPrep™



More Power

350 watt brush-less outer-runner motor is constructed with bigger magnets providing greater torque which saves energy compared to inner-runner motors



Cutting-Edge Design

Low-profile design with ergonomic hand grip for enhanced control and comfort for both right & left-handed operators. Balanced wrist support for two-handed sanding.

Cooling Fan

Patented spindle bearing fan enhances life by keeping motor & bearings at a lower temperature



Longer Life

Computer board completely protected with patented rubberized seal preventing environmental contamination. No lubrication required and maintenance free.



Orbits

3/16" for more aggressive 'level' sanding
3/32" for less aggressive 'finish' sanding

Speeds

4 operational speeds:
4,000, 7,000
9,000 &
10,000 RPM.
Versatile in all applications from level sanding to polish sanding

Overload Protection Programs

'Downforce Overload System' protects from excessive pressure. 'Temperature Overheat System' monitors temperature of internal electronic systems.

Internal Breaking System

Quick-stop speed reduction stops backup pad from spinning when pressure is taken off of throttle lever.

Portable

Sand on-site or in a production environment. Plugs directly into standard 110 volt outlet. Compact and lightweight.

Dust Free Sanding

Available in Central Vacuum which connects to a stand alone vacuum system.

Specifications

5" 2.89 lbs H: 3.94" L: 8.86"
6" 2.95 lbs H: 3.94" L: 9.33"

Certified Tool Repair

Qualified service technicians available.
All OEM parts available.

5" & 6" Electric Sanders

ELECTRIC RAY